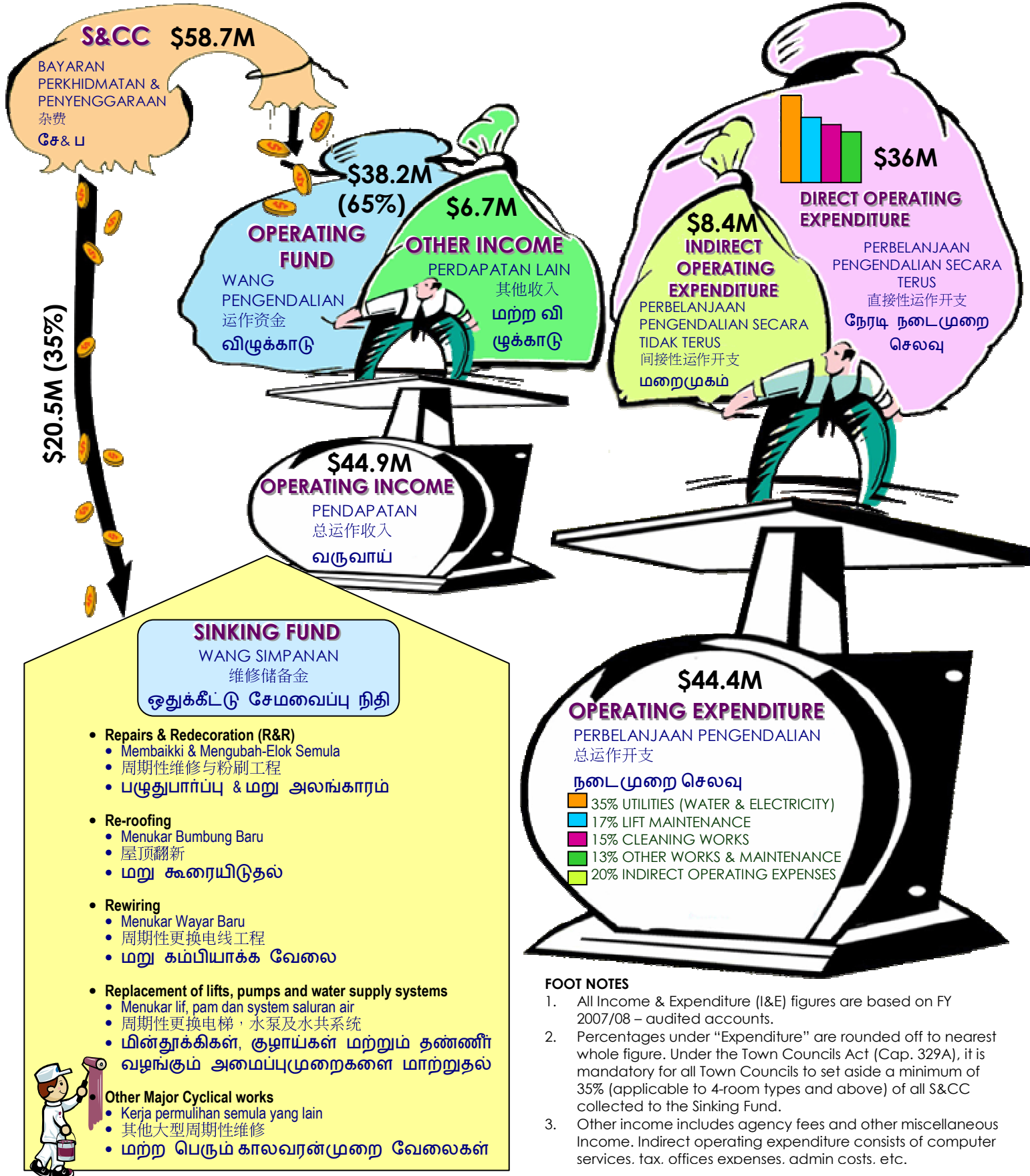


WHERE DOES YOUR S&CC GO TO?



FOOT NOTES

1. All Income & Expenditure (I&E) figures are based on FY 2007/08 – audited accounts.
2. Percentages under "Expenditure" are rounded off to nearest whole figure. Under the Town Councils Act (Cap. 329A), it is mandatory for all Town Councils to set aside a minimum of 35% (applicable to 4-room types and above) of all S&CC collected to the Sinking Fund.
3. Other income includes agency fees and other miscellaneous Income. Indirect operating expenditure consists of computer services, tax, offices expenses, admin costs, etc.